

REGIONAL TRANSIT ISSUE PAPER

| Agenda Item No. | Board Meeting Date | Open/Closed Session | Information/Action Item | Issue Date |
|-----------------|--------------------|---------------------|-------------------------|------------|
| 7 | 08/23/10 | Open | Action | 08/13/10 |

Subject: Consenting to grant of an easement agreement by the Sacramento-Placerville Transportation Corridor Joint Powers Authority to the City of Rancho Cordova for installation and maintenance of Street Improvements

ISSUE

Whether to consent to grant of an easement by the Sacramento-Placerville Transportation Corridor Joint Powers Authority (JPA) to the City of Rancho Cordova for installation and maintenance of curbs, gutters and sidewalks.

RECOMMENDED ACTION

Adopt Resolution No. 10-08-____, Consenting to Grant of an Easement by the Sacramento-Placerville Transportation Corridor Joint Powers Authority to the City of Rancho Cordova for the Installation and Maintenance of Street Improvements.

FISCAL IMPACT

None.

DISCUSSION

The subject properties are within the Sacramento-Placerville Transportation-Corridor Joint Powers Authority's (JPA) rail right of way over which RT has an easement interest. The easement area will consist of various parcels as described in Attachments "A1"- "A10", beginning at Folsom Boulevard east of Rod Beaudry, continuing east to West La Loma Drive, east to intersection of Moderna Court and Bravado Drive, continuing east onto Paseo Drive and Los Amigos Drive, to Mills Park Drive and Woodberry Way, continuing northeast to the intersection of Zinfandel Drive and Alicante Way to Don Juan Drive and Alicante Way, to the intersection of Olson Drive and Progress Court and ending at Trade Center Drive.

In May 2010, RT and the JPA issued a Right of Entry to the City of Rancho Cordova granting permission to install curbs, gutters and sidewalks along the right of way. Based on the Right of Entry agreement, the City of Rancho Cordova installed the curbs, gutters and sidewalks within the JPA's right of way. The Right of Entry provided that upon completion of the improvements authorized by the Right of Entry, the JPA would grant to the City of Rancho Cordova an easement interest in the property. Because the JPA owns the property, the JPA must grant the easement. However, because RT has an easement interest over the rail right of way, RT must also consent to the grant of the easement.

Approved:

Presented:

FINAL 8/16/10

General Manager/CEO

Director of Facilities

C:\Temp\BCL Technologies\NitroPDF6\@BCL@D006B3C1\@BCL@D006B3C1.doc

| Agenda Item No. | Board Meeting Date | Open/Closed Session | Information/Action Item | Issue Date |
|-----------------|--------------------|---------------------|-------------------------|------------|
| 7 | 08/23/10 | Open | Action | 08/13/10 |

Subject: Consenting to grant of an easement agreement by the Sacramento-Placerville Transportation Corridor Joint Powers Authority to the City of Rancho Cordova for installation and maintenance of Street Improvements

Pursuant to the terms of the easement agreement, the JPA will grant the City of Rancho Cordova an easement in gross over the area within the rail right of way that includes the street improvements. The easement will be granted to the City of Rancho Cordova at no charge.

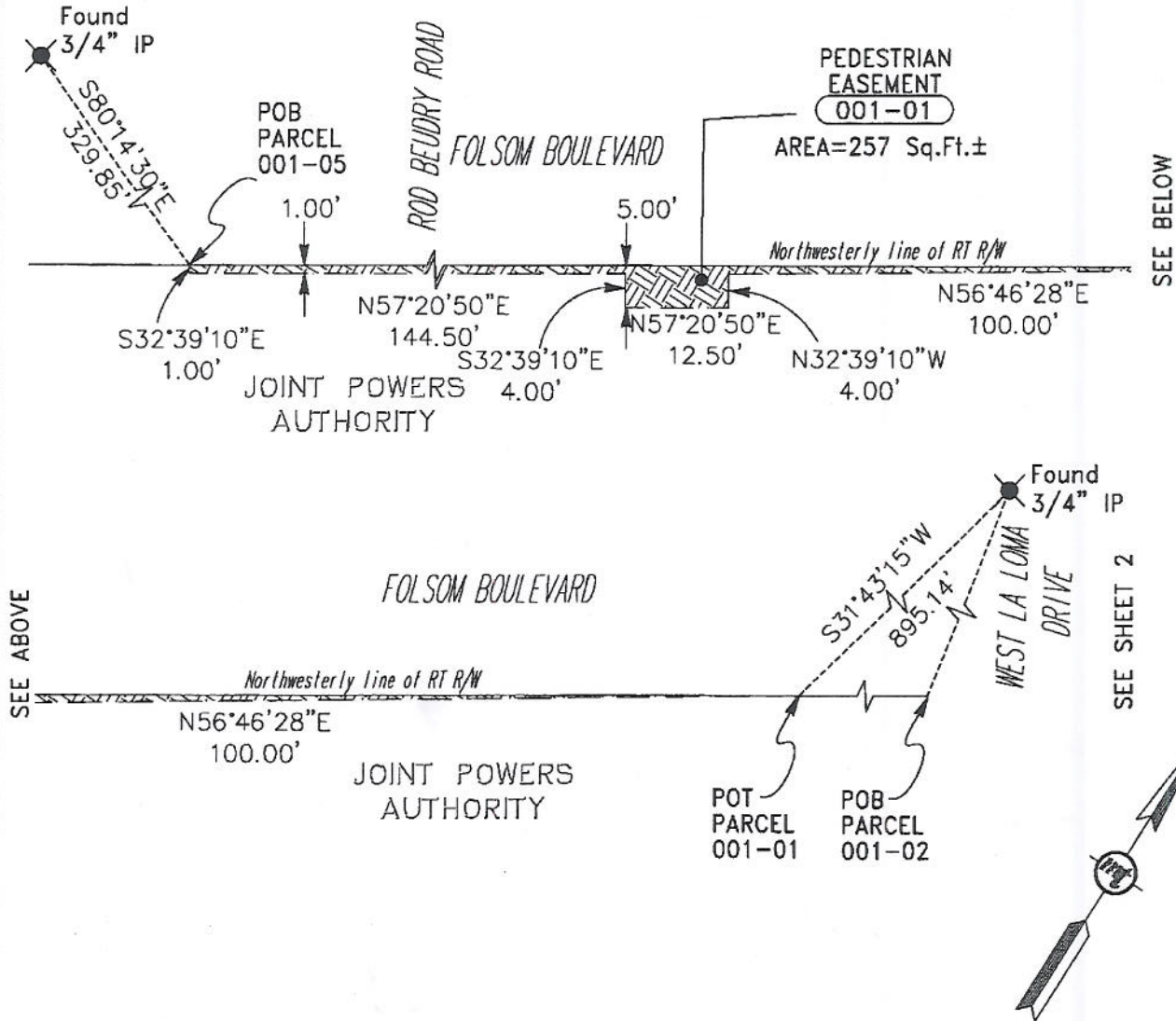
Staff recommends approval of the Easement Agreement between the JPA, RT and City of Rancho Cordova for the area containing the City of Rancho Cordova's street improvements within the rail right of way in the Amtrak/Folsom Corridor.

LEGEND

 PEDESTRIAN EASEMENT (TOTAL AREA=103,472 Sq.Ft.±)

POB POINT OF BEGINNING
 POT POINT OF TERMINATION

PLAT



Bearings and distances shown are based on the California Coordinate System 1983. Multiply distances shown by 1.000048 to obtain ground level distances.



SHEET 1 OF 10


 Mark Thomas & Company Inc.
 Scale 1"=20'
 Date 7/01/2010
 Drawn By BGB
 Checked By MJS

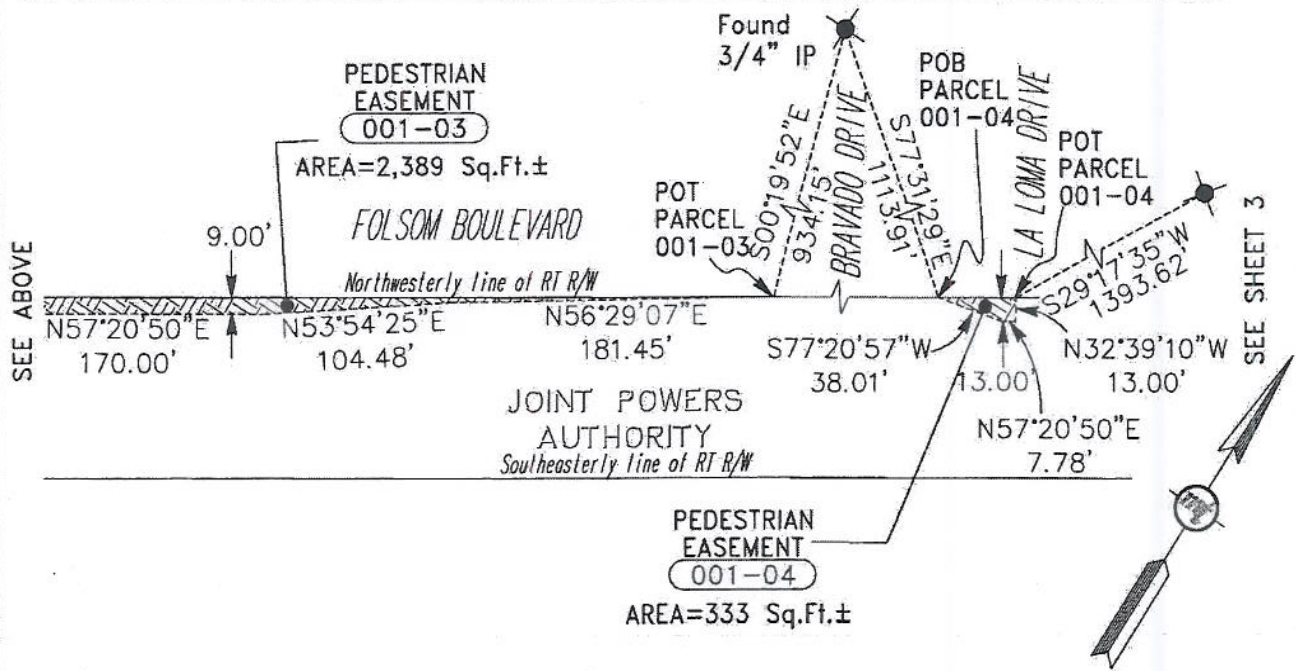
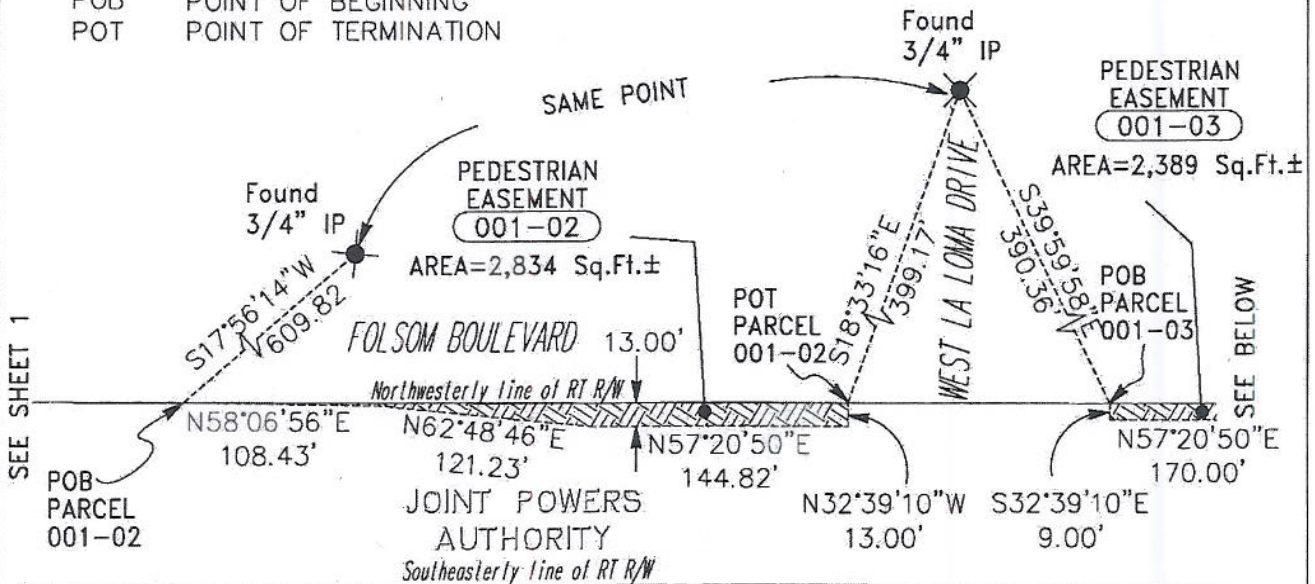
EXHIBIT B
PARCEL 001-01, 02, 03, 04, 05, 06, 07, 08, 09 & 10
PLAT TO ACCOMPANY LEGAL DESCRIPTION
IN THE CITY OF RANCHO CORDOVA
SACRAMENTO COUNTY, CALIFORNIA


 CITY OF RANCHO CORDOVA
 CALIFORNIA
 Incorporated 1981

LEGEND

 PEDESTRIAN EASEMENT (TOTAL AREA=103,472 Sq.Ft.±)

POB POINT OF BEGINNING
 POT POINT OF TERMINATION



Bearings and distances shown are based on the California Coordinate System 1983. Multiply distances shown by 1.000048 to obtain ground level distances.




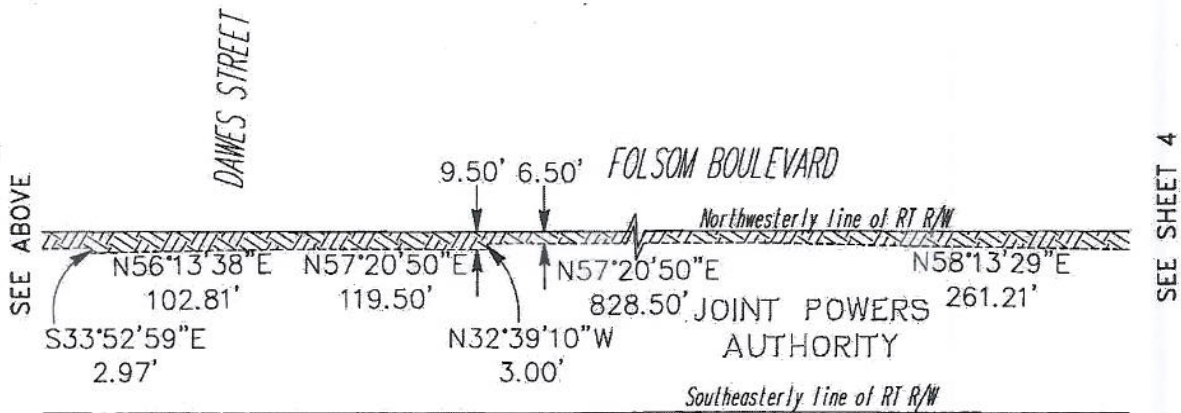
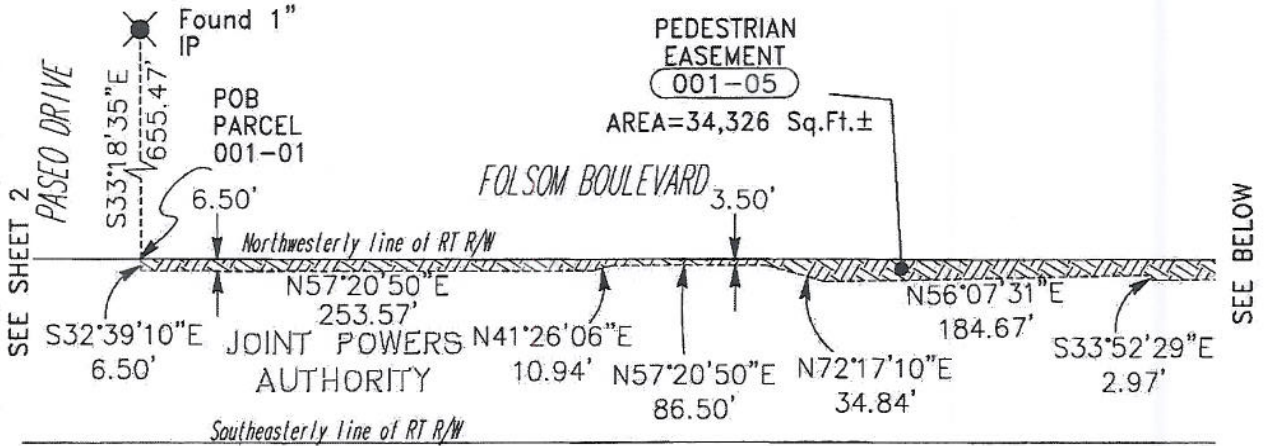
Scale 1"=100'
 Date 7/01/2010
 Drawn By BGB
 Checked By MJS

EXHIBIT B
PARCEL 001-01, 02, 03, 04, 05, 06,
07, 08, 09 & 10
PLAT TO ACCOMPANY LEGAL DESCRIPTION
IN THE CITY OF RANCHO CORDOVA
SACRAMENTO COUNTY, CALIFORNIA

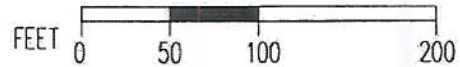


LEGEND

-  PEDESTRIAN EASEMENT (TOTAL AREA=103,472 Sq.Ft.±)
- POB POINT OF BEGINNING
- POT POINT OF TERMINATION



Bearings and distances shown are based on the California Coordinate System 1983. Multiply distances shown by 1.000048 to obtain ground level distances.



SHEET 3 OF 10




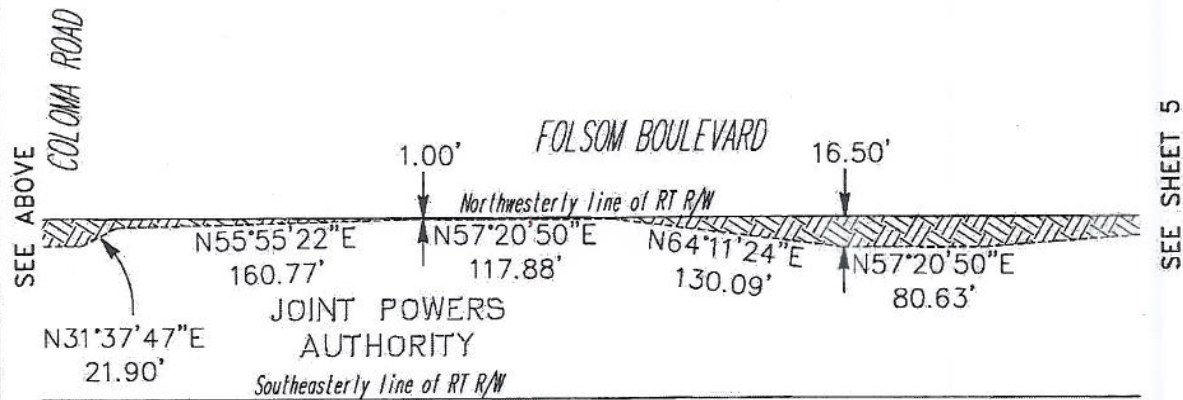
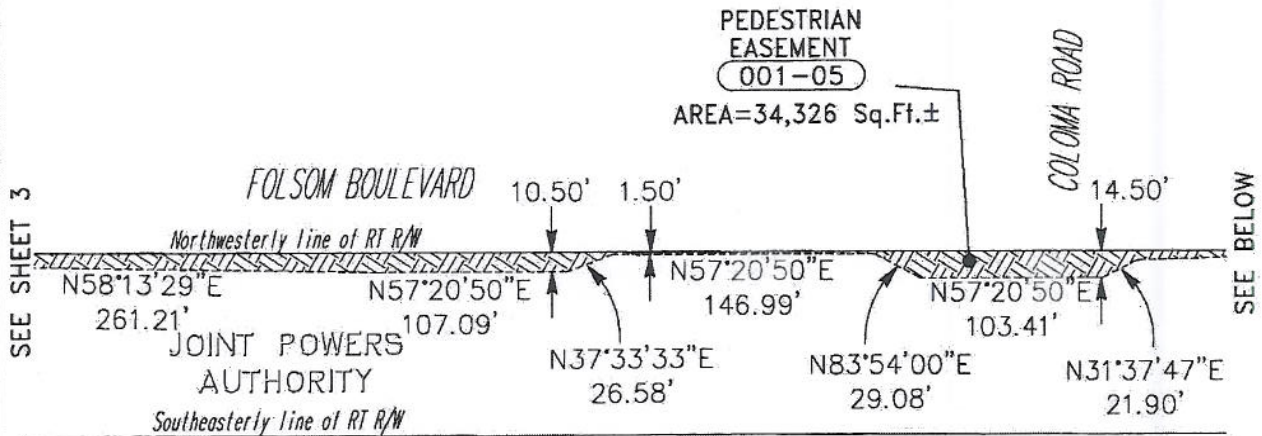
Scale 1"=100'
 Date 7/01/2010
 Drawn By BGB
 Checked By MJS

EXHIBIT B
PARCEL 001-01, 02, 03, 04, 05, 06,
07, 08, 09 & 10
PLAT TO ACCOMPANY LEGAL DESCRIPTION
IN THE CITY OF RANCHO CORDOVA
SACRAMENTO COUNTY, CALIFORNIA

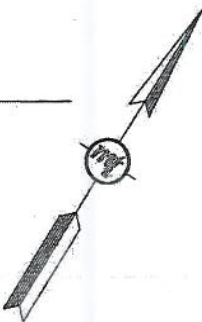


LEGEND

-  PEDESTRIAN EASEMENT (TOTAL AREA=103,472 Sq.Ft.±)
- POB POINT OF BEGINNING
- POT POINT OF TERMINATION



Bearings and distances shown are based on the California Coordinate System 1983. Multiply distances shown by 1.000048 to obtain ground level distances.




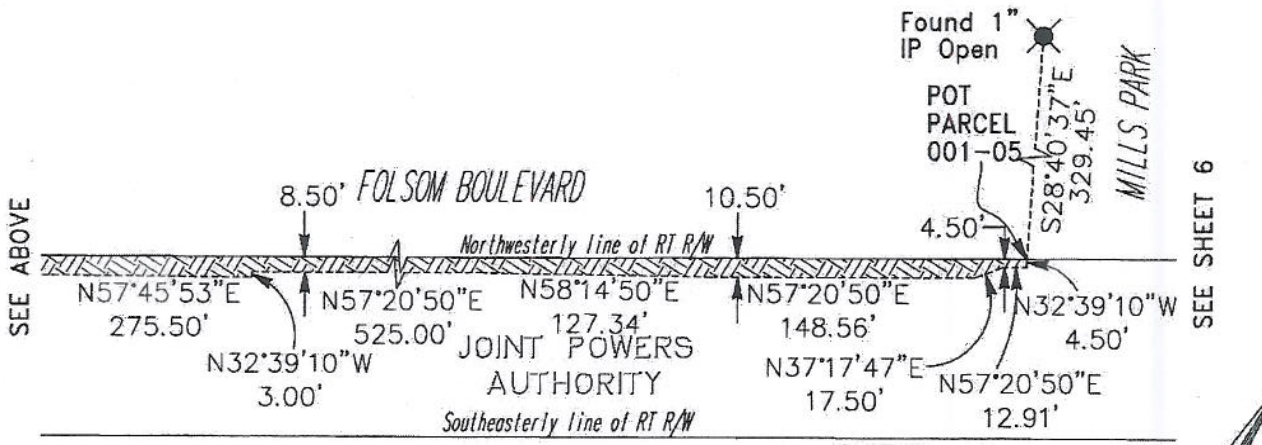
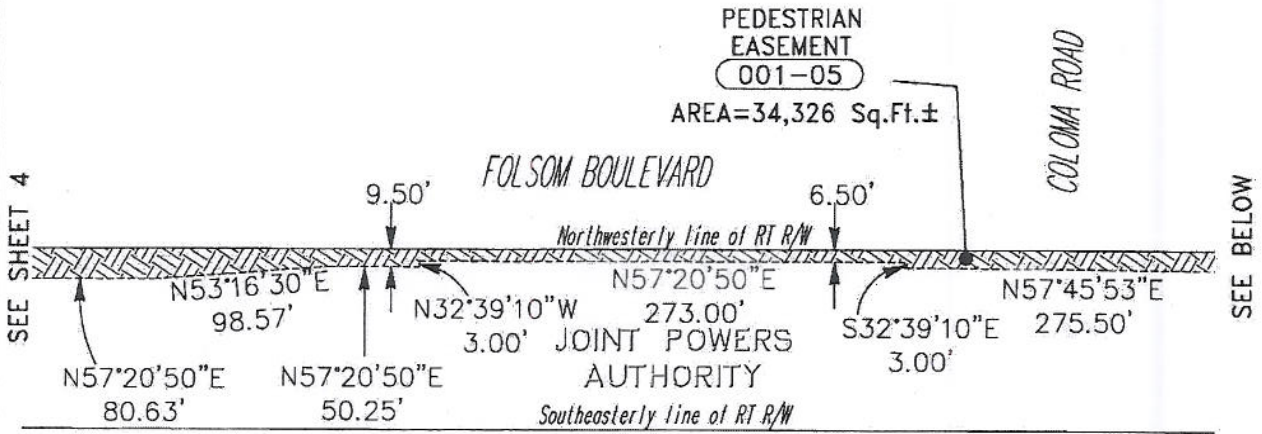
Mark Thomas & Company Inc.
 Scale 1"=100'
 Date 7/01/2010
 Drawn By BGB
 Checked By MJS

EXHIBIT B
PARCEL 001-01, 02, 03, 04, 05, 06,
07, 08, 09 & 10
PLAT TO ACCOMPANY LEGAL DESCRIPTION
IN THE CITY OF RANCHO CORDOVA
SACRAMENTO COUNTY, CALIFORNIA



LEGEND

-  PEDESTRIAN EASEMENT (TOTAL AREA=103,472 Sq.Ft.±)
- POB POINT OF BEGINNING
- POT POINT OF TERMINATION



Bearings and distances shown are based on the California Coordinate System 1983. Multiply distances shown by 1.000048 to obtain ground level distances.





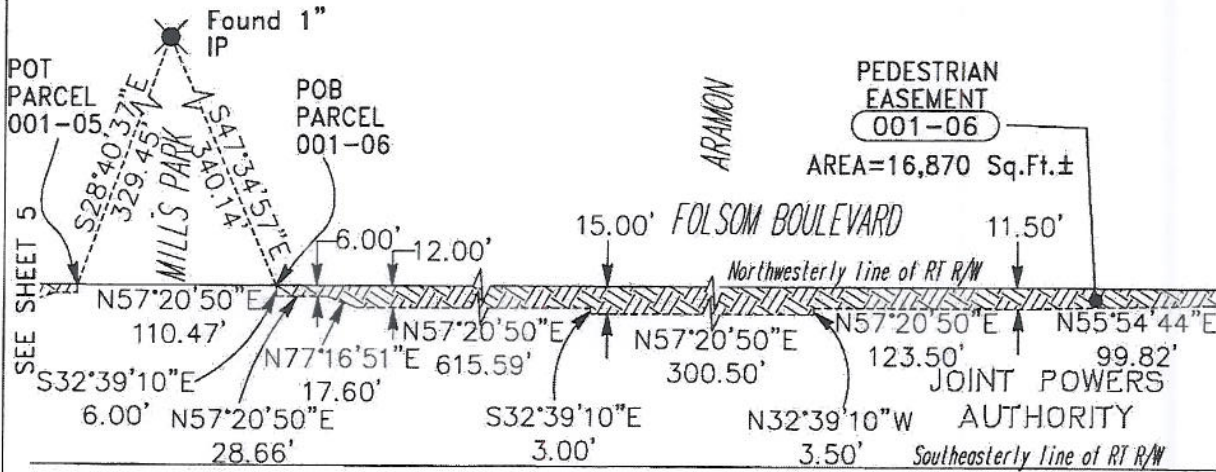
 Mark Thomas & Company Inc.
 Scale 1"=100'
 Date 7/01/2010
 Drawn By BGB
 Checked By MJS

EXHIBIT B
PARCEL 001-01, 02, 03, 04, 05, 06,
07, 08, 09 & 10
PLAT TO ACCOMPANY LEGAL DESCRIPTION
IN THE CITY OF RANCHO CORDOVA
SACRAMENTO COUNTY, CALIFORNIA

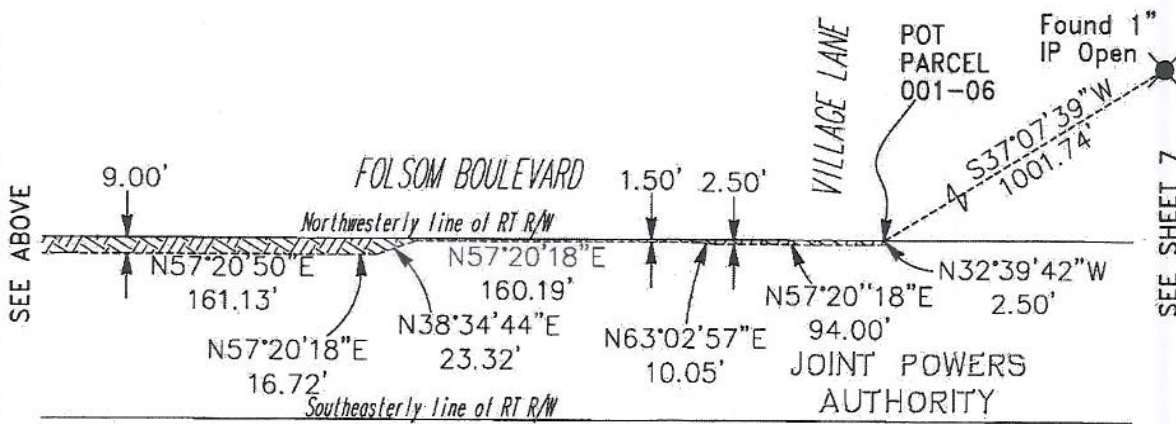


LEGEND

-  PEDESTRIAN EASEMENT (TOTAL AREA=103,472 Sq.Ft.±)
- POB POINT OF BEGINNING
- POT POINT OF TERMINATION



SEE BELOW



SEE SHEET 7

Bearings and distances shown are based on the California Coordinate System 1983. Multiply distances shown by 1.000048 to obtain ground level distances.




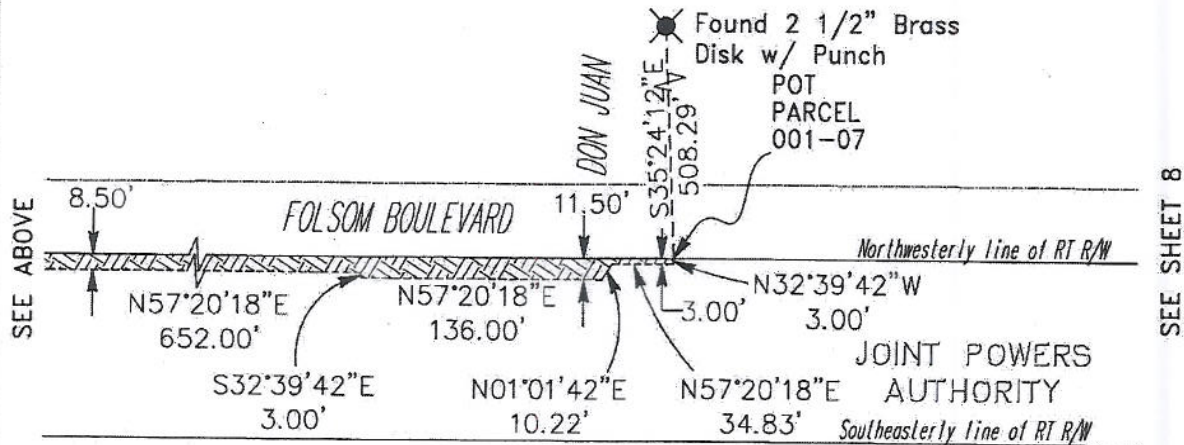
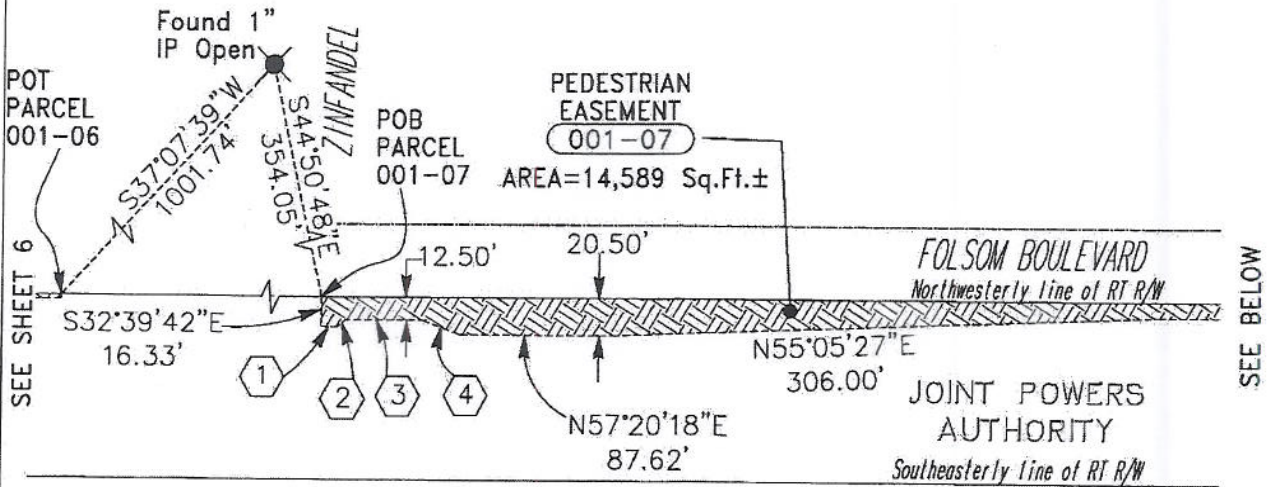
Scale 1"=100'
 Date 7/01/2010
 Drawn By BGB
 Checked By MJS

EXHIBIT B
PARCEL 001-01, 02, 03, 04, 05, 06,
07, 08, 09 & 10
PLAT TO ACCOMPANY LEGAL DESCRIPTION
IN THE CITY OF RANCHO CORDOVA
SACRAMENTO COUNTY, CALIFORNIA



LEGEND

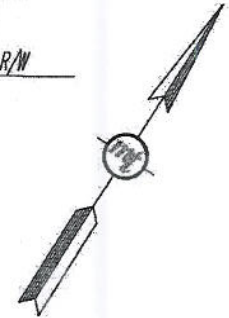
-  PEDESTRIAN EASEMENT (TOTAL AREA=103,472 Sq.Ft.±)
- POB POINT OF BEGINNING
- POT POINT OF TERMINATION



COURSE TABLE

| | |
|---------------------|----------------------|
| ① N59°16'59"E 8.63' | ③ N57°20'18"E 42.50' |
| ② N17°44'40"E 6.48' | ④ N77°23'22"E 23.33' |

Bearings and distances shown are based on the California Coordinate System 1983. Multiply distances shown by 1.000048 to obtain ground level distances.





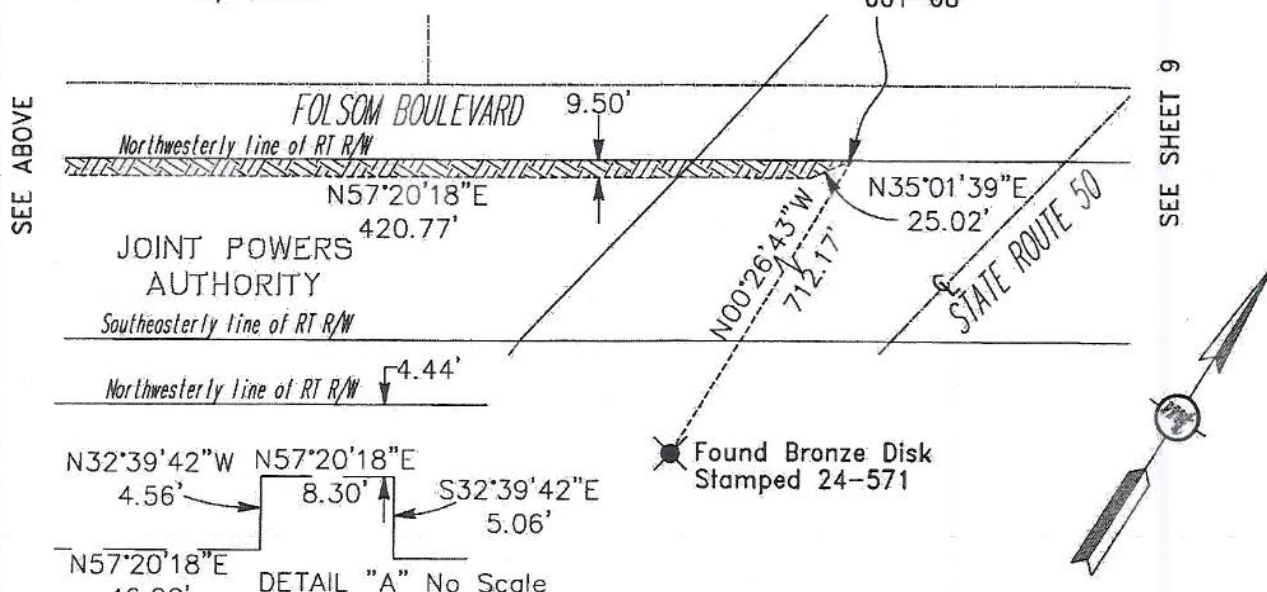
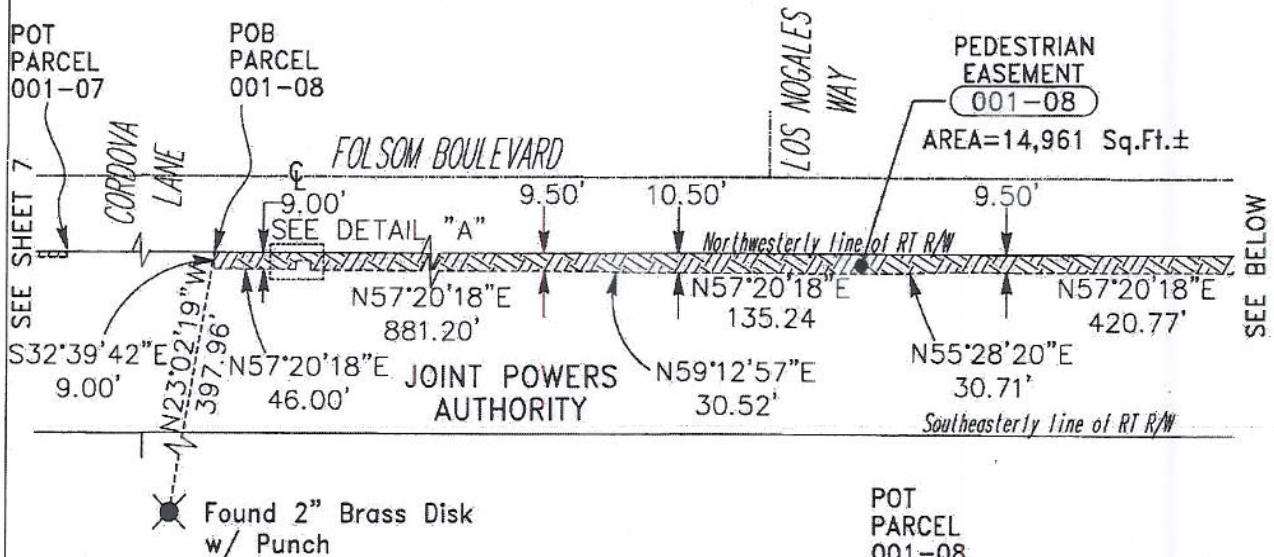
 Mark Thomas & Company Inc.
 Scale 1"=100'
 Date 7/01/2010
 Drawn By BGB
 Checked By MJS

EXHIBIT B
PARCEL 001-01, 02, 03, 04, 05, 06, 07, 08, 09 & 10
PLAT TO ACCOMPANY LEGAL DESCRIPTION
IN THE CITY OF RANCHO CORDOVA
SACRAMENTO COUNTY, CALIFORNIA


 CITY OF RANCHO CORDOVA
 CALIFORNIA
 Incorporated 2005

LEGEND

-  PEDESTRIAN EASEMENT (TOTAL AREA=103,472 Sq.Ft.±)
- POB POINT OF BEGINNING
- POT POINT OF TERMINATION



DETAIL "A" No Scale
 Bearings and distances shown are based on the California Coordinate System 1983. Multiply distances shown by 1.000048 to obtain ground level distances.




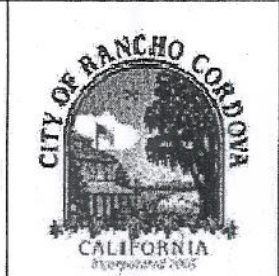
 Mark Thomas & Company Inc.
 Scale 1"=100'
 Date 7/01/2010
 Drawn By BGB
 Checked By MJS

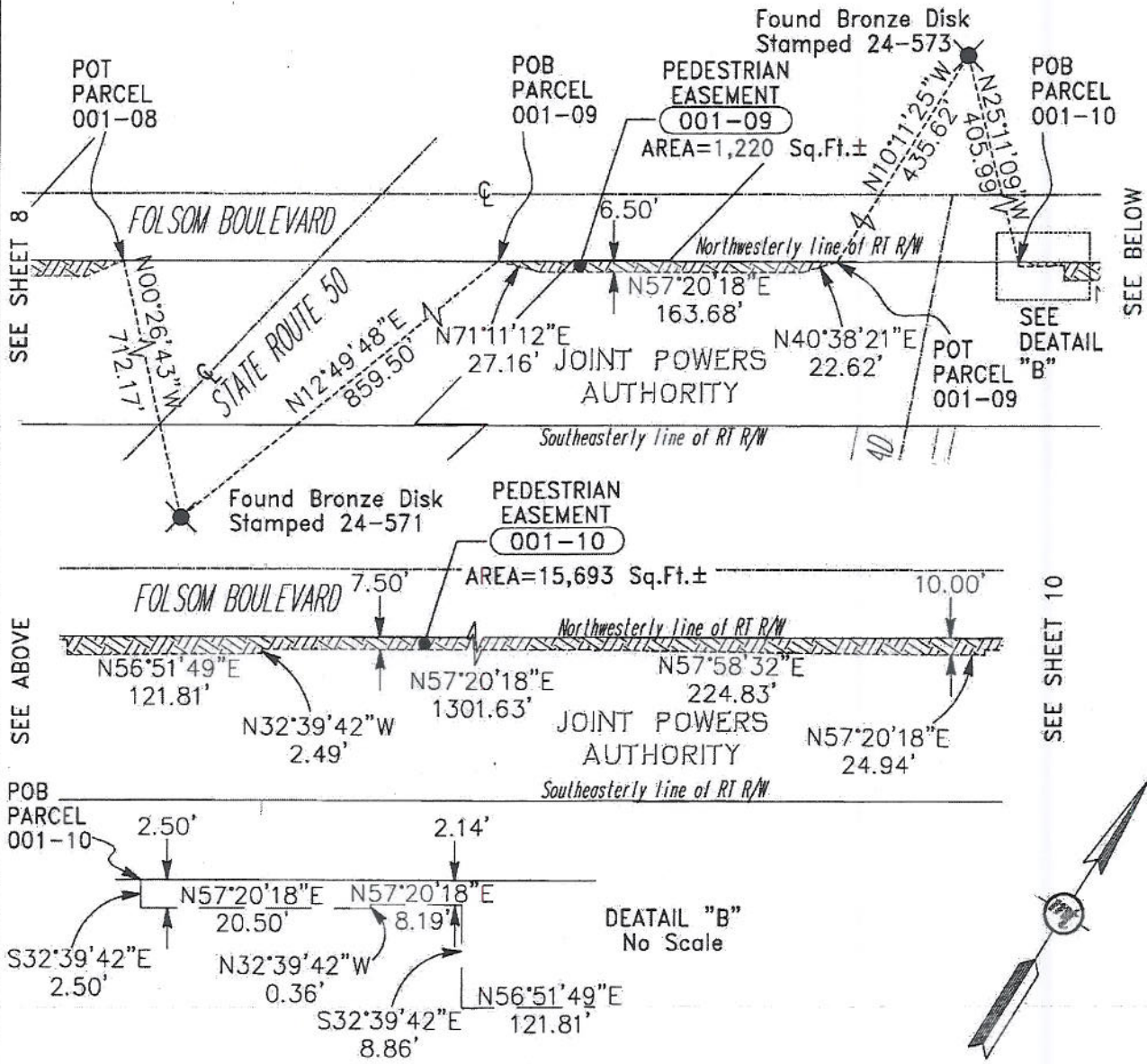
EXHIBIT B
PARCEL 001-01, 02, 03, 04, 05, 06, 07, 08, 09 & 10
PLAT TO ACCOMPANY LEGAL DESCRIPTION
IN THE CITY OF RANCHO CORDOVA
SACRAMENTO COUNTY, CALIFORNIA



LEGEND

 PEDESTRIAN EASEMENT (TOTAL AREA=103,472 Sq.Ft.±)

POB POINT OF BEGINNING
 POT POINT OF TERMINATION



Bearings and distances shown are based on the California Coordinate System 1983. Multiply distances shown by 1.000048 to obtain ground level distances.





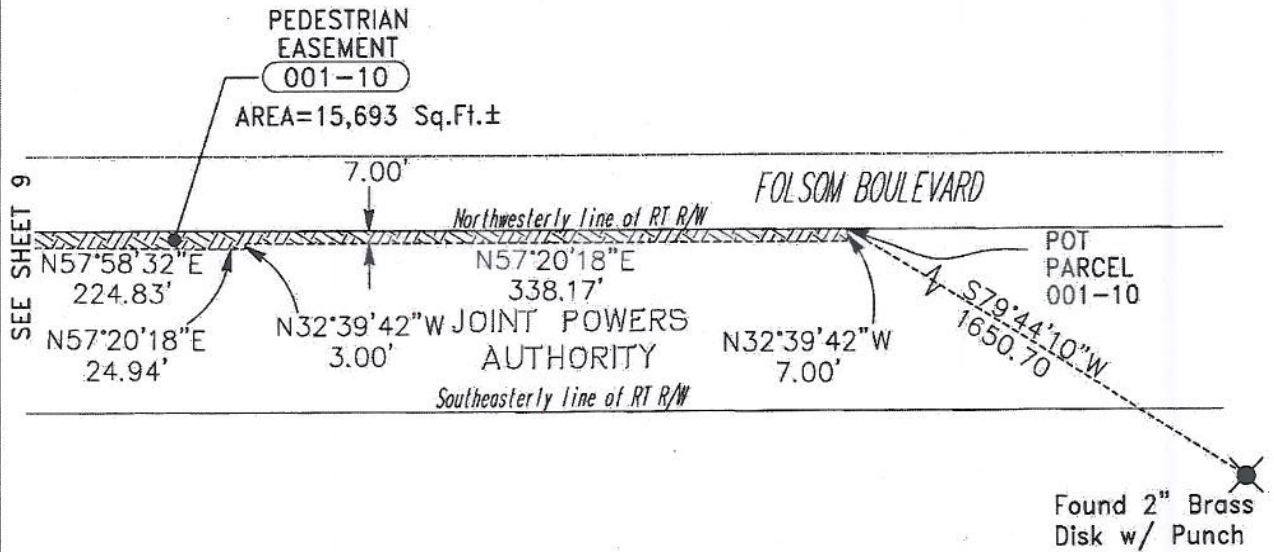
 Mark Thomas & Company Inc.
 Scale 1"=100'
 Date 7/01/2010
 Drawn By BGB
 Checked By MJS

EXHIBIT B
PARCEL 001-01, 02, 03, 04, 05, 06, 07, 08, 09 & 10
PLAT TO ACCOMPANY LEGAL DESCRIPTION
IN THE CITY OF RANCHO CORDOVA
SACRAMENTO COUNTY, CALIFORNIA



LEGEND


-  PEDESTRIAN EASEMENT (TOTAL AREA=103,472 Sq.Ft.±)
- POB POINT OF BEGINNING
- POT POINT OF TERMINATION



Bearings and distances shown are based on the California Coordinate System 1983. Multiply distances shown by 1.000048 to obtain ground level distances.



SHEET 10 OF 10



Mark Thomas & Company Inc.

Scale 1"=100'

Date 7/01/2010

Drawn By BGB

Checked By MJS

EXHIBIT B

PARCEL 001-01, 02, 03, 04, 05, 06, 07, 08, 09 & 10

PLAT TO ACCOMPANY LEGAL DESCRIPTION IN THE CITY OF RANCHO CORDOVA SACRAMENTO COUNTY, CALIFORNIA



RESOLUTION NO. 10-08-_____

Adopted by the Board of Directors of the Sacramento Regional Transit District on this date:

August 23, 2010

**CONSENTING TO GRANT OF AN EASEMENT BY THE SACRAMENTO-
PLACERVILLE TRANSPORTATION CORRIDOR JOINT POWERS AUTHORITY TO
THE CITY OF RANCHO CORDOVA FOR THE INSTALLATION AND MAINTENANCE
OF STREET IMPROVEMENTS**

BE IT HEREBY RESOLVED BY THE BOARD OF DIRECTORS OF THE
SACRAMENTO REGIONAL TRANSIT DISTRICT AS FOLLOWS:

THAT, the Easement agreement between the Sacramento-Placerville Transportation Corridor Joint Powers Authority (therein referred to as "JPA"), the Sacramento Regional Transit District (therein referred to as "RT") (collectively referred to therein as "Grantor") and the City of Rancho Cordova (therein referred to as "Grantee"), whereby Grantor grants a non-exclusive easement in gross for the purpose of maintaining street improvements along the Amtrak/Folsom Corridor right of way, is hereby approved.

THAT, the General Manager/CEO is hereby authorized and directed to execute said Easement Agreement.

STEVE MILLER, Chair

A T T E S T:

MICHAEL R. WILEY, Secretary

By: _____
Cindy Brooks, Assistant Secretary